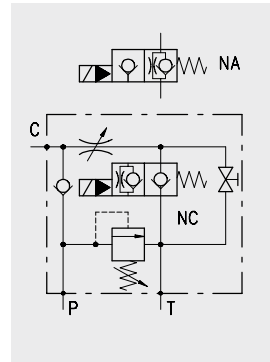


**Operation**

This valve allows performance at all functions required by lifting systems using single acting cylinders.

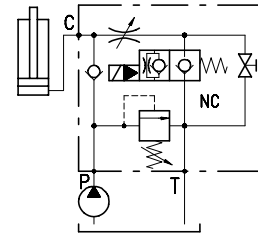
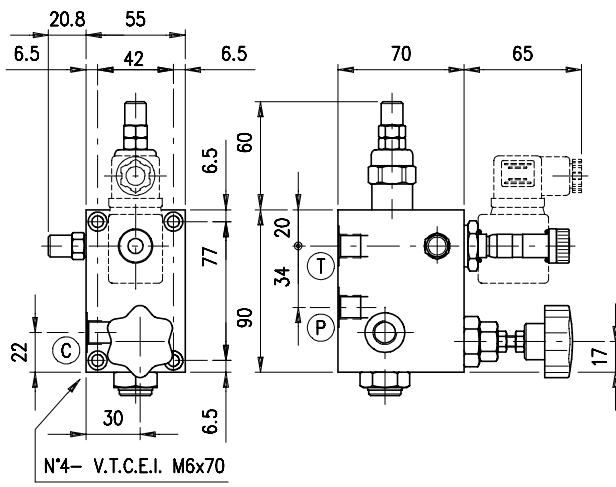


**Performance**

**Body Valves**

Tipo	Maximum flow		Maximum pressure bar	Coils*	Oil leak from C to T	Weight	
	l/min	US gpm				kg	lb
VE/B/VMP/VUI/SR 14 (38 VP)	20	5.3	350 -5100 psi-	BE see page 12	0,25 cm <sup>3</sup> /min -15x10 <sup>-3</sup> in <sup>3</sup> /min- (5 drops) at 210 bar -3050 psi-	1,27 (alum.) 2,65 (steel)	2,80 (alum.) 5,84 (steel)

\*Warning: BE...RAC solenoids and special connector should be strictly used with the NA version powered by AC current



VE/B/VMP/VUI/SR	P-C	T
14	G 1/4	G 1/4
38/VP	G 3/8	G 3/8

ERROR: invalidaccess  
OFFENDING COMMAND: put

STACK:

/28

1

```
[/.notdef /.notdef /.notdef /.notdef /.notdef /.notdef /.notdef /.notdef  
/.notdef /.notdef /.notdef /.notdef /.notdef /.notdef /.notdef /.notdef  
/.notdef /.notdef /.notdef /.notdef /.notdef /.notdef /.notdef /.notdef  
/.notdef /.notdef /.notdef /.notdef /.notdef /.notdef /.notdef /.notdef  
/space /exclam /quotedbl /numbersign /dollar /percent /ampersand /  
quoteright /parenleft /parenright /asterisk /plus /comma /hyphen /period  
/slash /zero /one /two /three /four /five /six /seven /eight /nine /  
colon /semicolon /less /equal /greater /question /at /A /B /C /D /E /F /  
G /H /I /J /K /L /M /N /O /P /Q /R /S /T /U /V /W /X /Y /Z /bracketleft  
/backslash /bracketright /asciicircum /underscore /quoteleft /a /b /c /d  
/e /f /g /h /i /j /k /l /m /n /o /p /q /r /s /t /u /v /w /x /y /z /  
braceleft /bar /braceright /asciitilde /.notdef /.notdef /.notdef /  
.notdef /.notdef /.notdef /.notdef /.notdef /.notdef /.notdef /.notdef /  
.notdef /.notdef /.notdef /.notdef /.notdef /.notdef /.notdef /.notdef /  
.notdef /.notdef /.notdef /.notdef /.notdef /.notdef /.notdef /.notdef /  
.notdef /.notdef /.notdef /.notdef /.notdef /.notdef /.notdef /  
exclamdown /cent /sterling /fraction /yen /florin /section /currency /  
quotesingle /quotedblleft /guillemotleft /guilsinglleft /guilsingright  
/fi /fl /.notdef /endash /dagger /daggerdbl /periodcentered /.notdef /  
paragraph /bullet /quotesinglbase /quotedblbase /quotedblright /  
guillemotright /ellipsis /perthousand /.notdef /questiondown /.notdef /  
grave /acute /circumflex /tilde /macron /breve /dotaccent /dieresis /  
.notdef /ring /cedilla /.notdef /hungarumlaut /ogonek /caron /emdash /  
.notdef /.notdef /.notdef /.notdef /.notdef /.notdef /.notdef /.notdef /  
.notdef /.notdef /.notdef /.notdef /.notdef /.notdef /.notdef /.notdef /  
AE /.notdef /ordfeminine /.notdef /.notdef /.notdef /.notdef /Lslash /  
Oslash /OE /ordmasculine /.notdef /.notdef /.notdef /.notdef /.notdef /  
ae /.notdef /.notdef /.notdef /dotlessi /.notdef /.notdef /lslash /  
oslash /oe /germandbls /.notdef /.notdef /.notdef /.notdef ]  
[/.notdef /.notdef /.notdef /.notdef /.notdef /.notdef /.notdef /.notdef  
/.notdef /.notdef /.notdef /.notdef /.notdef /.notdef /.notdef /.notdef  
/.notdef /.notdef /.notdef /.notdef /.notdef /.notdef /.notdef /.notdef  
/.notdef /.notdef /.notdef /.notdef /.notdef /.notdef /.notdef /.notdef  
/space /exclam /quotedbl /numbersign /dollar /percent /ampersand /  
quoteright /parenleft /parenright /asterisk /plus /comma /hyphen /period  
/slash /zero /one /two /three /four /five /six /seven /eight /nine /  
colon /semicolon /less /equal /greater /question /at /A /B /C /D /E /F /  
G /H /I /J /K /L /M /N /O /P /Q /R /S /T /U /V /W /X /Y /Z /bracketleft  
/backslash /bracketright /asciicircum /underscore /quoteleft /a /b /c /d  
/e /f /g /h /i /j /k /l /m /n /o /p /q /r /s /t /u /v /w /x /y /z /  
braceleft /bar /braceright /asciitilde /.notdef /.notdef /.notdef /  
.notdef /.notdef /.notdef /.notdef /.notdef /.notdef /.notdef /.notdef /  
.notdef /.notdef /.notdef /.notdef /.notdef /.notdef /.notdef /.notdef /  
.notdef /.notdef /.notdef /.notdef /.notdef /.notdef /.notdef /.notdef /  
.notdef /.notdef /.notdef /.notdef /.notdef /.notdef /.notdef /  
exclamdown /cent /sterling /fraction /yen /florin /section /currency /  
quotesingle /quotedblleft /guillemotleft /guilsinglleft /guilsingright  
/fi /fl /.notdef /endash /dagger /daggerdbl /periodcentered /.notdef /  
paragraph /bullet /quotesinglbase /quotedblbase /quotedblright /  
guillemotright /ellipsis /perthousand /.notdef /questiondown /.notdef /  
grave /acute /circumflex /tilde /macron /breve /dotaccent /dieresis /  
.notdef /ring /cedilla /.notdef /hungarumlaut /ogonek /caron /emdash /  
.notdef /.notdef /.notdef /.notdef /.notdef /.notdef /.notdef /.notdef /  
.notdef /.notdef /.notdef /.notdef /.notdef /.notdef /.notdef /.notdef /  
AE /.notdef /ordfeminine /.notdef /.notdef /.notdef /.notdef /Lslash /  
Oslash /OE /ordmasculine /.notdef /.notdef /.notdef /.notdef /.notdef /  
ae /.notdef /.notdef /.notdef /dotlessi /.notdef /.notdef /lslash /  
oslash /oe /germandbls /.notdef /.notdef /.notdef /.notdef ]
```